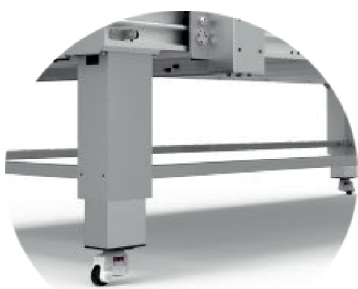
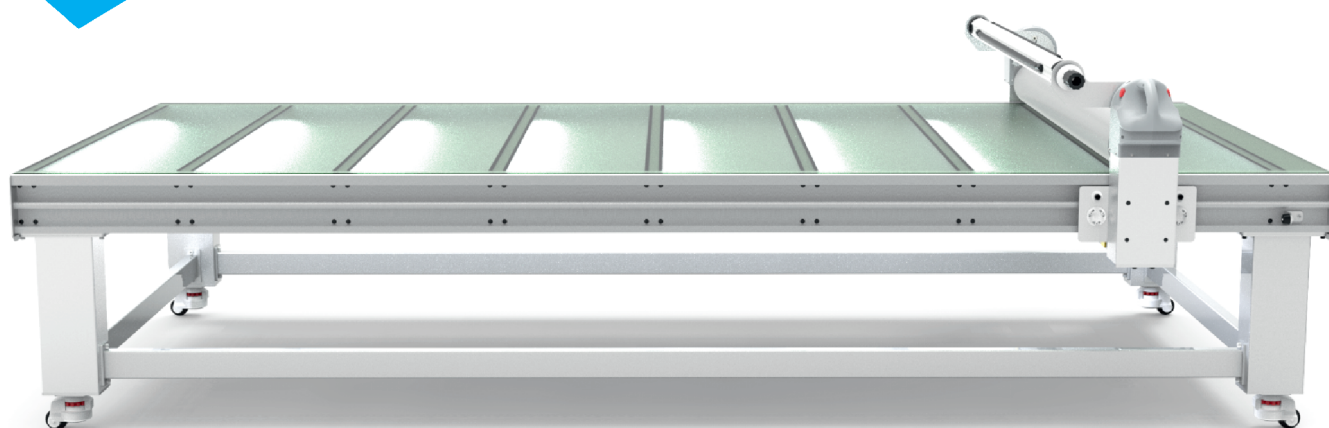


WORK FLAT SERIES

60° Warm Laminator with Autom.-Lift

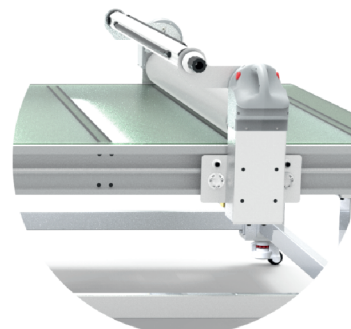
Opti Lam
YOU PRINT - WE LAMINATE



Easy electric Lifting
move up to 100mm



Easy pneumatic Lifting
<-> 50mm



Easy Rail System
with LED Table

Max work width:	1.3/1.6m	Up and down:	Pneumatic	Power:	2000W
Max work length:	2.5/ 3.2m	Working type:	Manual	Volt:	220V
Max thickness:	50mm	Warm up time:	5-10min	LED:	Yes
Max temp:	60°C	Silicon roller:	130mm dia.	Automatic Lift:	100mm

DEALER:

WWW.OPTILAM.COM